

KNOWLEDGE BASE ARTICLE

Custom Search Page for SharePoint Online



Disclaimer

For the purposes of this Disclaimer:

- **Company** (referred to as either "the Company", "We", "Us" or "Our" in this Disclaimer) refers to Vitextra SIA, LV-1009 Riga, Matise iela 61 - 25.
- **Document** refers to the Knowledgebase Article.
- **You** means the individual accessing the Document, or the company, or other legal entity on behalf of which such individual is accessing or using the Document, as applicable.
- **Website** refers to Vitextra, accessible from <https://vitextra.com>

Disclaimer

The information contained in the Document is for general information purposes only.

The Company assumes no responsibility for errors or omissions in the contents of the Document.

In no event shall the Company be liable for any special, direct, indirect, consequential, or incidental damages or any damages whatsoever, whether in an action of contract, negligence, or other torts, arising out of or in connection with the use of the contents of the Document. The Company reserves the right to make additions, deletions, or modifications to the contents in the Document at any time without prior notice.

Errors and Omissions Disclaimer

The information given by the Document is for general guidance on matters of interest only. Therefore, errors can occur even if the Company takes every precaution to ensure that the Document's content is current and accurate. Plus, given the changing nature of laws, rules, and regulations, there may be delays, omissions, or inaccuracies in the information contained in the Document.

The Company is not responsible for any errors or omissions, or for the results obtained from the use of this information.

Fair Use Disclaimer

The Company may use copyrighted material that the copyright owner has not explicitly authorized. The Company is making such material available for criticism, comment, news reporting, teaching, scholarship, or research.

The Company believes this constitutes a "fair use" of any such copyrighted material as provided for in section 107 of the United States Copyright law.

If You wish to use copyrighted material from the Document for your own purposes that go beyond fair use, You must obtain permission from the copyright owner.

"Use at Your Own Risk" Disclaimer

All information in the Document is provided "as is", with no guarantee of completeness, accuracy, timeliness or of the results obtained from the use of this information, and without warranty of any kind, express or implied, including, but not limited to warranties of performance, merchantability and fitness for a particular purpose.

The Company will not be liable to You or anyone else for any decision made or action taken in reliance on the information given by the Service or for any consequential, special or similar damages, even if advised of the possibility of such damages.

Contact Us

If you have any questions about this Disclaimer, You can contact Us by email: support@vitextra.com.

Table Of Contents

Create New Page	4
Web Part Configuration	5
Data Source	6
Appearance	6
Filtering	7
Sorting	7
Item Layout	8
Item Actions	8
Search Settings	9
Conclusion	10
Terms	11

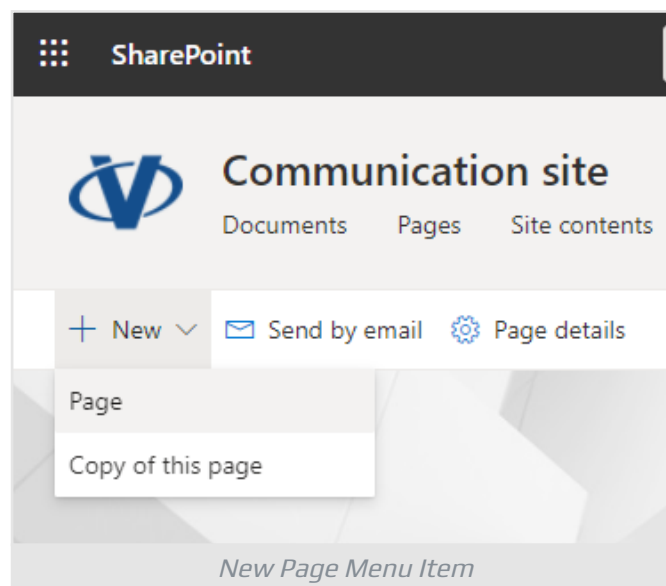
Effective content searching is crucial for maximizing productivity and ensuring that users can quickly find the information they need within a SharePoint site. The [Smart Search](#) web part is an essential tool in this process, offering customizable search functionalities that can be tailored to meet specific organizational needs. Built on the **SharePoint Framework** (SPFx), the Smart Search web part supports both SharePoint Online and **Microsoft Teams**, providing a seamless and integrated search experience across platforms.

This flexibility not only enhances the user experience but also improves the accuracy and relevance of search results. By leveraging the Smart Search web part, users can streamline information retrieval, reduce time spent on searching, and ultimately boost overall efficiency.

This article describes how to set up a search page and configure the Smart Search web part to create a custom search results page for SharePoint Online from scratch.

Create New Page

To add and configure the Smart Search web part on a new SharePoint page, start by navigating to the SharePoint site where you want to create the new page. Click on the gear icon in the top right corner and select "**Site contents**". From there, click on "**New**" and choose "**Page**" from the dropdown menu.

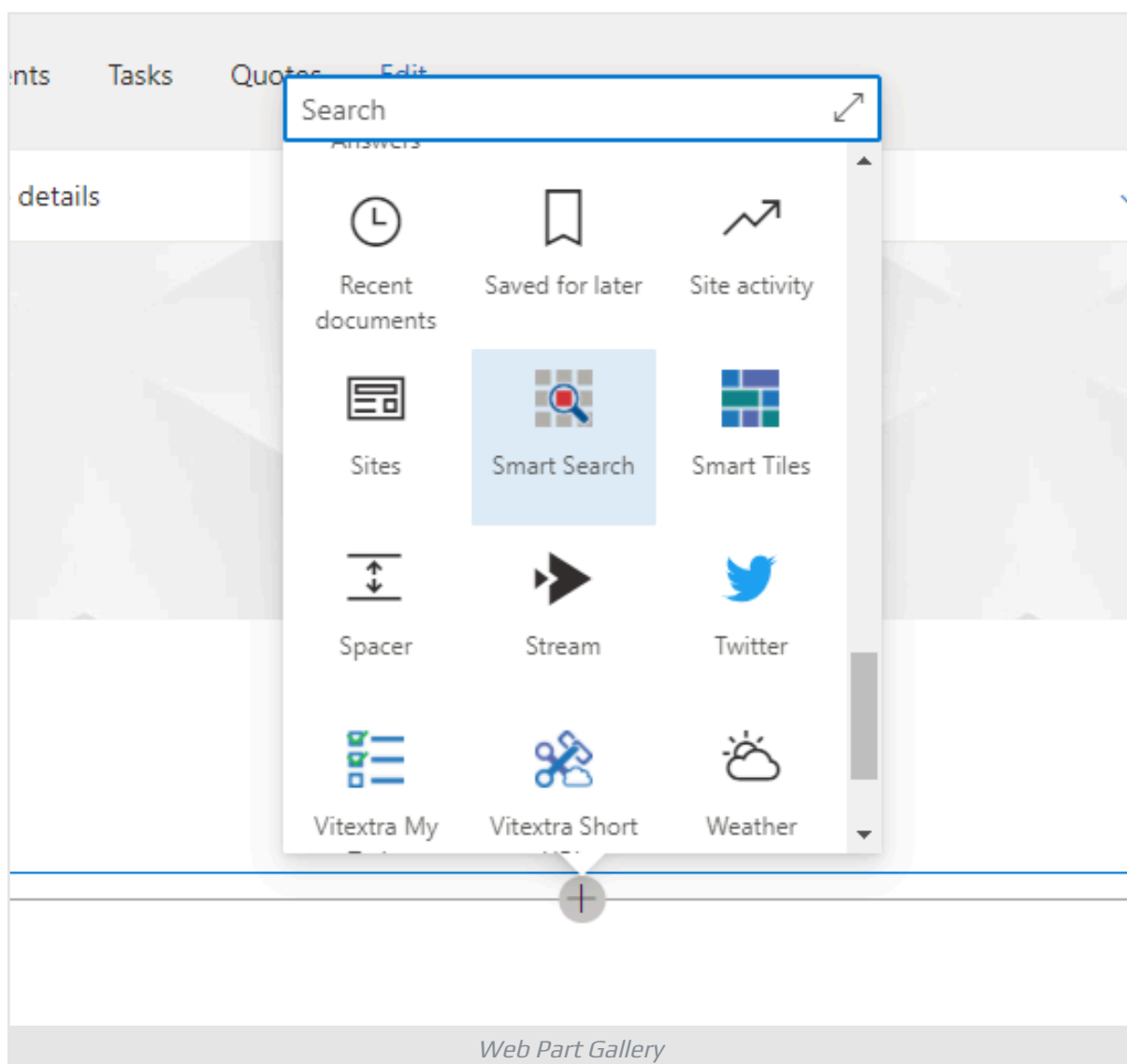


Select a page template that suits your needs and click "**Create**".

 **Tip**

The Smart Search supports a **single app page**. You can switch to the **App** tab and select Smart Search to create a new app page.

Once the new page is created, it will automatically open in edit mode. Hover your mouse above or below an existing section until you see a line with a circled plus sign. Click this plus sign to open the web part toolbox. Browse through the available web parts or use the search box to find the Smart Search web part. Click on it to add it to the page.



Web Part Configuration

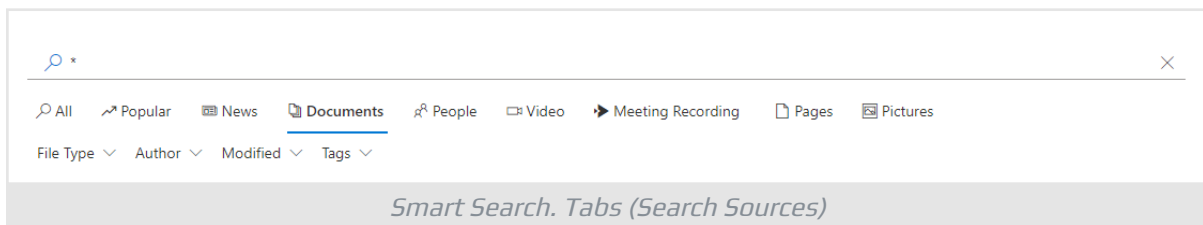
After adding the Smart Search web part, you can configure its settings by clicking the "Edit web part" button, which looks like a pencil icon, on the left side of the

web part. This action will open a configuration pane on the right side of the screen, where you can adjust settings.

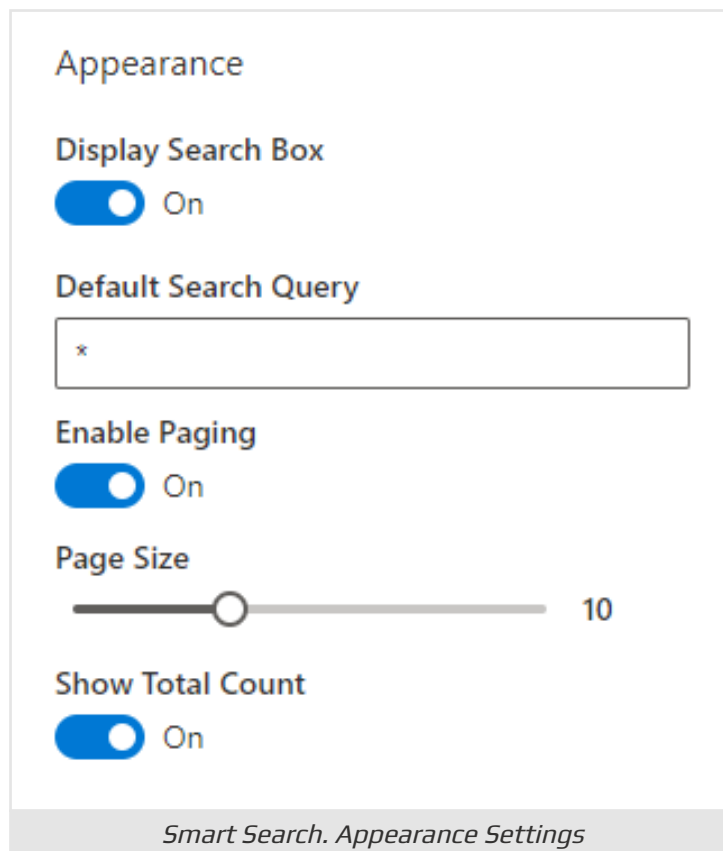
Data Source

In the first configuration section, you can choose the scope and operation mode for the web part. You can search within the entire tenant, including **OneDrive** and team sites, or you can limit the search to the current **site collection** or **site**.

There are two modes of operation for the Smart Search: **Single Source** and **Multiple Sources (Tabs)**. In **Single Source** mode, you choose one of the built-in search sources to limit the search scope. Tabs are not displayed in this mode. In **Multiple Sources** mode, users can switch between different sources.



Appearance



Below are settings to manage the appearance of the web part:

Display Search Box. Show or hide the search box.

 **Tip**

The Smart Search web part uses the query from the top header search bar if there is no value in the search box or the box is hidden

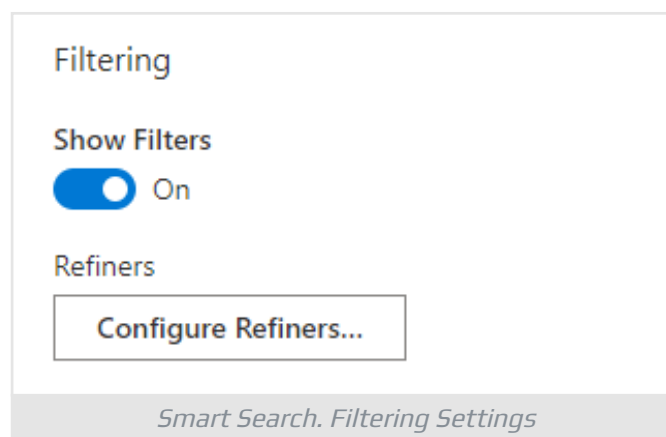
Default Search Query. Query to use when the search box is empty or hidden.

Enable Paging. Show or hide pagination.

Page Size. Number of items per page.

Show Total Count. Displays total number of search results.

Filtering

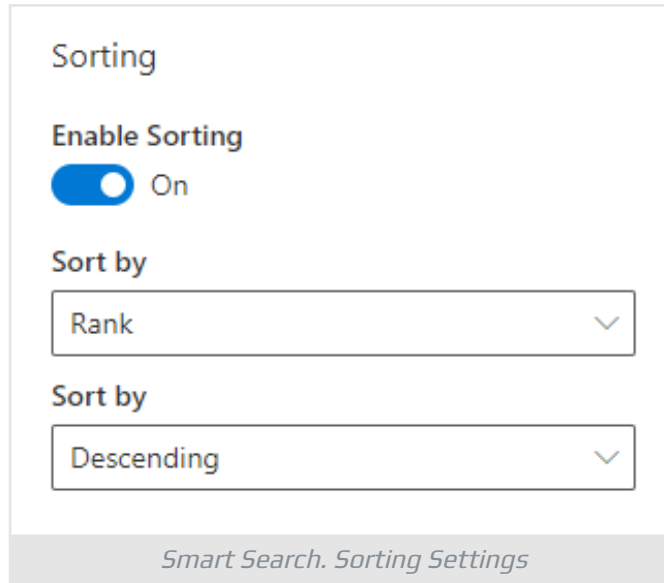


Click "**Show Filters**" to enable the refinement panel. To choose which fields will be available for filtering and set their order, click the "**Configure Refiners**" button.

 **Tip**

If the refinement panel is enabled, users can filter search results by tag by clicking it in the list.

Sorting

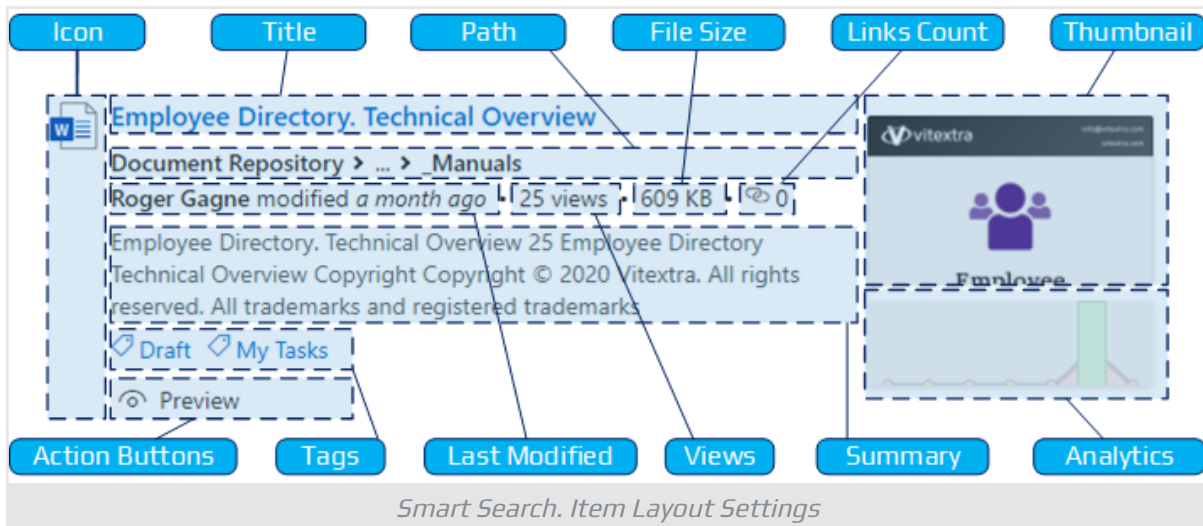


Click "**Enable Sorting**" to set the default sorting order for the search results.

Note

Sorting is not applicable to "**Popular**" and "**Recently Changed Items**" data sources.

Item Layout



Each search result item has 12 fields to display information. You can show or hide each field except the title. Also, you can choose the length of the summary (from 100 to 300 characters).

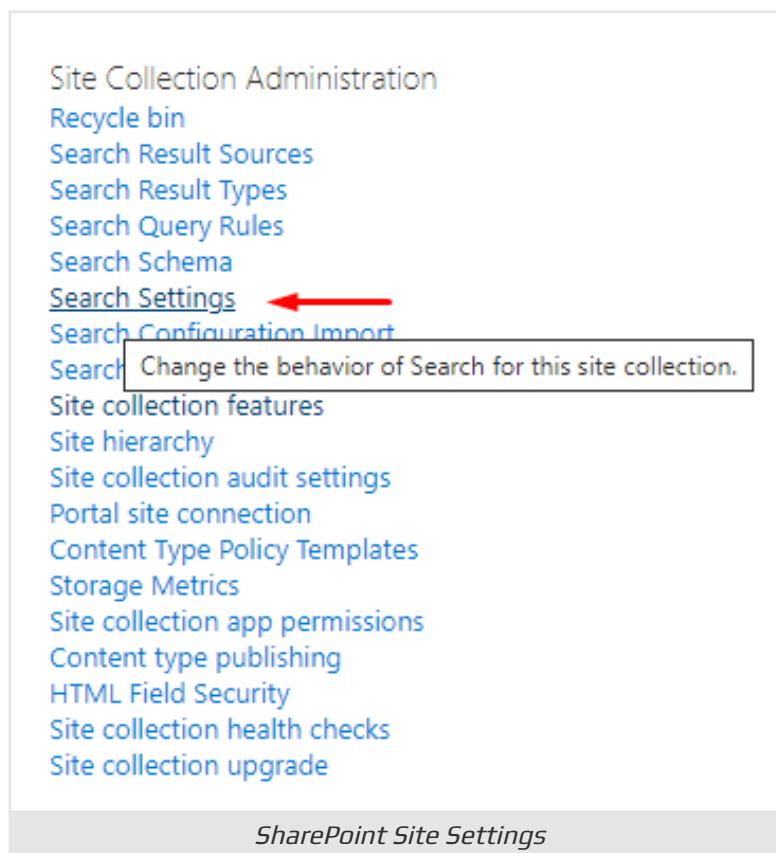
Item Actions

The Smart Search provides three actions for users to take without opening additional browser tabs:

- **Download**
- **Preview** for a document to open it in the dialog window
- **Play** for video content to start playing it in the dialog

Search Settings

Go to site settings and select **Search Settings** under **Site Collection Administration** heading:



Type in server-relative URL to the new search page in the **Results page URL**:

Use this page to configure how Search behaves in this site collection. The shared Search Box at the top of most pages will use these settings. Note: A change to these settings may take up to 30 minutes to take effect. Changes made here will affect this site collection and all sites within it.

Enter a Search Center URL

When you've specified a search center, the search system displays a message to all users offering them the ability to try their search again from that Search Center.

Search Center URL:

Example: /SearchCenter/Pages or http://server/sites/SearchCenter/Pages

Which search results page should queries be sent to?

Custom results page URLs can be relative or absolute.

URLs can also include special tokens, such as {SearchCenterURL}. This token will be replaced by the value in the "Search Center URL" property. If the value in this property ever changes, any URL using the token will update automatically.

Example:
{SearchCenterURL}/results.aspx

Use the same results page settings as my parent.

Send queries to a custom results page URL.

Results page URL:

Example: /SearchCenter/Pages/results.aspx or http://server/sites/SearchCenter/Pages/results.aspx

Turn on the drop-down menu inside the search box, and use the first Search Navigation node as the destination results page.

OK Cancel

SharePoint Search Settings

It may take up to 5 minutes for the change to be applied. After that, SharePoint will redirect all search requests to the new page.

Conclusion

The Vitextra Smart Search web part is a versatile and powerful tool for enhancing the search experience in SharePoint Online and Microsoft Teams. By creating a custom search results pages, it provides a tailored and efficient way to find and manage information. With features like multiple search sources, customizable appearance, and advanced filtering and sorting options, the Smart Search significantly improves the usability and functionality of your SharePoint environment.

Implementing the Smart Search can streamline your search processes, making it easier for users to locate the information they need quickly and effectively.

Terms

App Page

App Page in SharePoint Online is a specialized type of page designed to host a single web part or app. It provides a focused, full-page experience dedicated to a specific functionality or application, allowing the app to utilize the entire page space without other distractions. This layout is ideal for scenarios requiring a large amount of data display or complex interactions, such as dashboards, data entry forms, or detailed reports.

Microsoft Teams

A chat-based collaboration platform for business communications with useful features for online meetings, live events, document sharing.

OneDrive for Business

OneDrive for Business (previously SkyDrive Pro) is a managed cloud storage for work or school organizations that lets you share and collaborate on work documents with co-workers. Physically hosting infrastructure for OneDrive for Business can be hosted on-premises or in the cloud as a purchased service.

SharePoint Framework (SPFx)

Model for building client-side web-part, components, and extensions for SharePoint Online, SharePoint On-premises, and Microsoft Teams. SPFx customizations are based on JavaScript and support Modern UI natively.

Site

A SharePoint Site is essentially a container for information within the SharePoint platform. SharePoint Sites typically offer a range of features including document libraries, lists, calendars, discussion boards, and workflows, facilitating efficient collaboration, communication, and document management within teams or across departments. These sites can be customized and configured to suit the specific needs and workflows of an organization.

Site Collection

A SharePoint Site Collection is a grouping or container within the SharePoint platform that consists of one or more SharePoint sites, subsites, and related content. A SharePoint Site Collection typically shares common settings, permissions, and configurations, providing a cohesive environment for users to work together on projects, departments, or specific areas of focus. Site Collections are often used to segregate content and control access rights based on organizational structure, security requirements, or project needs.